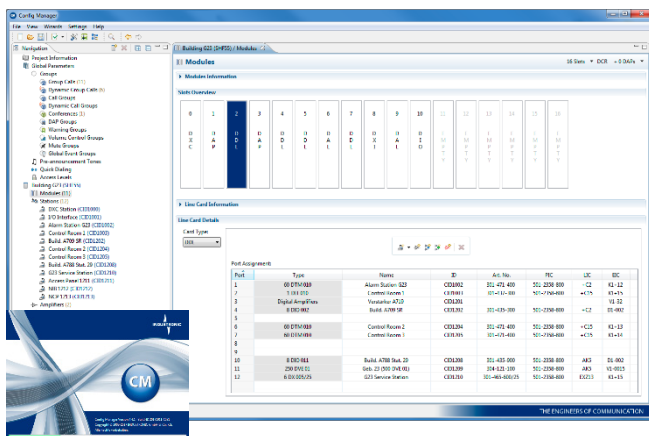


# Config Manager for INTRON-D *plus*

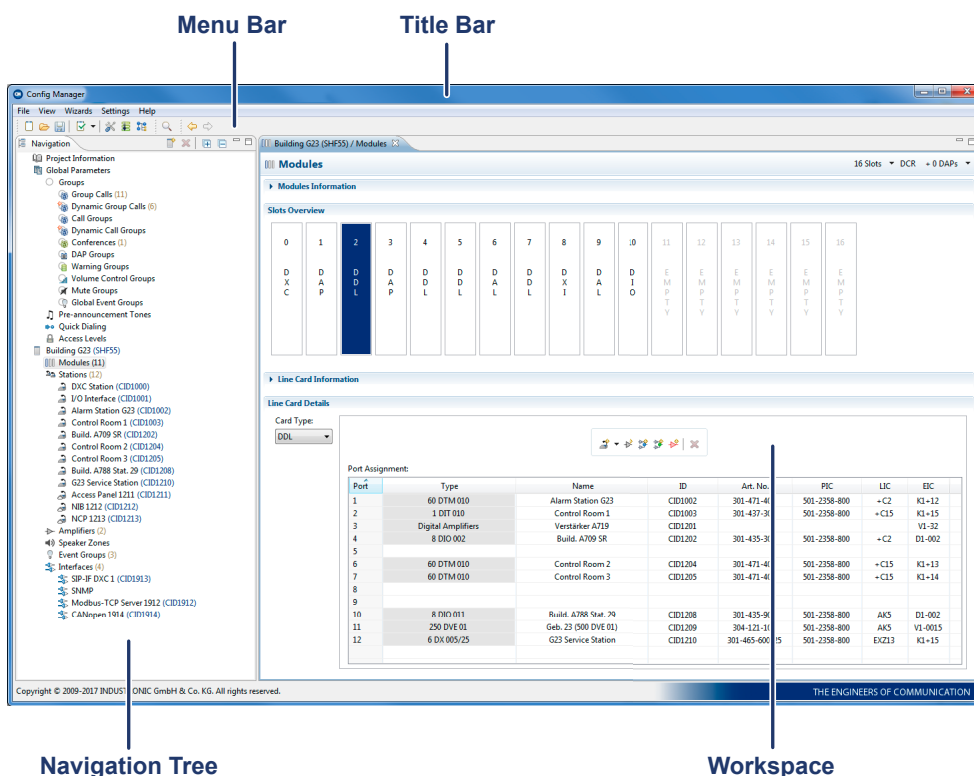


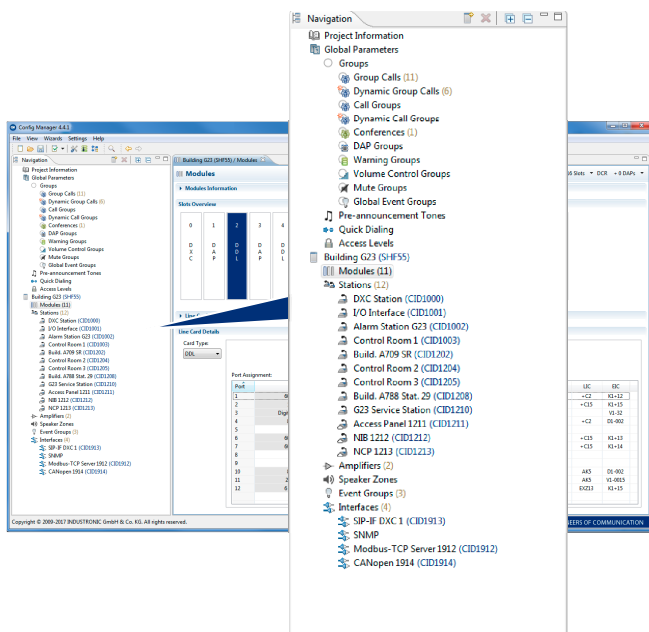
## Features and Functions

- Visual representation, checking and evaluation of INDUSTRONIC system configurations
- Clearly structured system components
- Syntax and semantic check of all data entered
- Intuitive user interface

Config Manager, INDUSTRONIC's configuration software allows for the parameterization of the industrial INTRON-D *plus* communication and public address system from INDUSTRONIC. From basic voice connections to complex warning sequences, all functions can be parameterized via the intuitive user interface. The configuration can then be checked for correctness using a syntax and semantic check.

Any data contained in the project can be summarized and clearly arranged. The Config Manager is supplied on an USB dongle and runs only in combination with it.

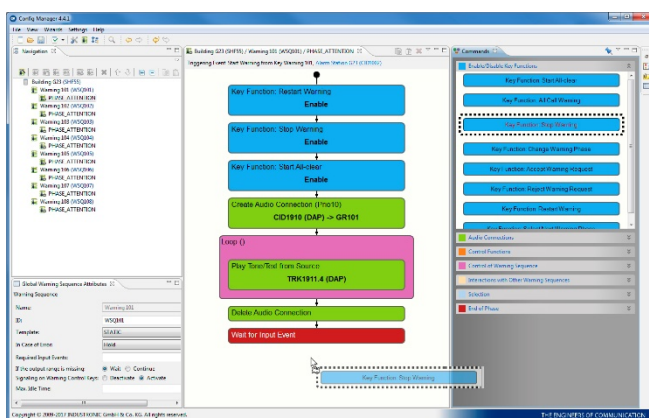




### Clear User Interface

The user interface has a clearly structured and consistent design for intuitive user actions thus simplifying your work considerably. The entire project is arranged in a clear navigation tree, for example.

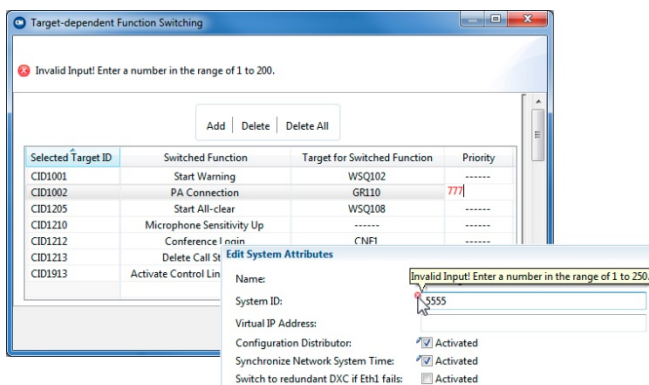
You can also customize the user interface according to your needs.



### Easily Move Objects via Drag & Drop

In many views, you can move data and interface elements via drag and drop.

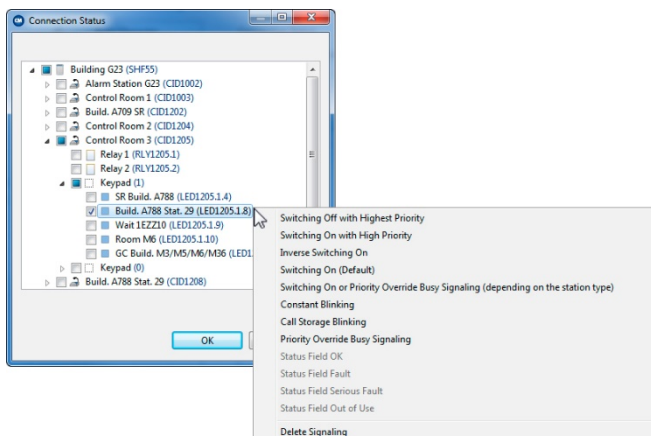
With this feature, you can organize complex alarm scenarios and warning sequences. To do this, simply select a command and drag it into the workspace. When releasing the item, it is automatically positioned at the right place.



### Automatic Validity Check

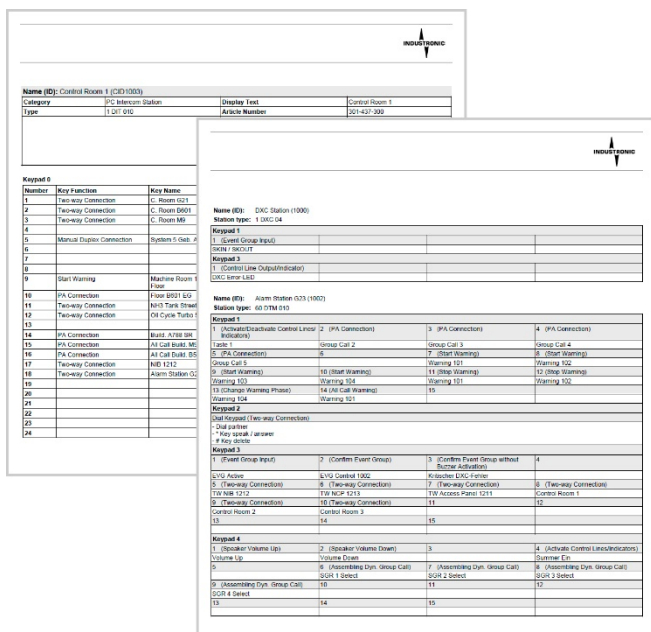
The software assists you. Receive direct feedback when entering data. This helps to avoid wrong data input in advance.

A red circle next to the input field indicates that the values you entered are wrong, for example. A short help text displays information on the correct input of parameters.



## Context Menus

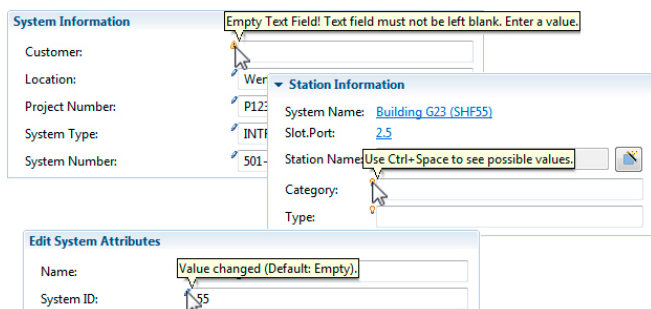
In many views, you can invoke context menus, where you can choose only from those functions that are possible in this context.



## Reports and Prints

You can clearly summarize project data and configuration settings you made in reports.

All reports provided can be exported in Excel, Word or PDF format and can be saved and/or printed for further use. This way, you can enclose current project data to your project documentation.



## Tooltips

On the user interface, the software often gives you hints e.g. via icons appearing directly next to input fields or via the changing color of an input field.

When hovering the mouse over these icons, a tooltip appears providing further information.

---

**Other Features**

- Creation of complex control functions/warning sequences
- Configuration of conferences, event groups, volume control groups, quick dial numbers, and amplifiers
- Configuration of interfaces (SIP telephony, Modbus TCP, CANopen®, SNMP)
- Creation and output of different reports (e.g. overview of all project data or configured group calls)
- Activation of function-related parameters
- User assistance when entering data
- Automatic display of all system default values
- Comprehensive file management of INTRON-D *plus* configuration files
- Change of user language (available languages: German and English)

---

**PC Configuration and System Requirements**

- |                         |  |
|-------------------------|--|
| • Operating system      | Microsoft® Windows® 7/8/10                         |
| • Processor             | 1 GHz  |
| • RAM                   | 1 GB   |
| • Hard disk space       | 500 MB   |
| • Screen size           | Min. 15"; recommended: 17"                         |
| • Screen resolution     | 1280 x 1024  |
| • Interfaces and drives | USB port (USB 2.0, backward compatible to USB 1.1) |

---

**Order Data**
**Type Number**

100-702-200

---

**INDUSTRONIC®**

Industrie-Electronic GmbH & Co. KG  
 Carl-Jacob-Kolb-Weg 1  
 97877 Wertheim / Germany

Phone: +49 9342 871-0  
 Fax: +49 9342 871-565

info@industronic.de  
 www.industronic.com

Subject to technical modifications